



**Clockwise from top** The bay window in the kitchen keeps the area light and bright; another bay window was an addition to the facade; the dining room has sliding door access to the outside; Melanie Turner with her children Ryan and Jessica.

## A FRESH START

The Boston Mk 2 from Fairmont Homes offers spacious family living, room to work from home as well as being an entertainer's delight

words **john merriman** photography **nick clayton**

**F**aced with the option of expensive renovations to an old home or starting anew with a knock down and rebuild, Melanie Turner chose the latter.

"I had inherited the home, on a large block of around 950sqm, from my father," Melanie says. "It was pretty old and needed a lot of work, and after speaking to a few experts I quickly discovered it would make better financial sense to knock the old home down and build something new."

With two children, Jessica, 12, and Ryan, 10, a minimum of three bedrooms was a must. "Originally I had looked at a larger design with Fairmont but once I did my sums I realised I couldn't afford it," she says. "The agent suggested I look at the Boston Mk 2 because it was similar in design but a little smaller, so more affordable. After walking through the home I just loved it, especially the large kitchen

set behind a big bay window. It is really central so I can be cooking meals and still be able to keep an eye on the kids.

"I play eight ball a lot so I really wanted a space that accommodated a table and still feel spacious and roomy. With the opening into the formal dine people can spill into this room and sit at the table and still see what is happening in the family area."

Melanie also chose to increase the ceiling height from 2.4m up to 2.7m to make the home feel larger. She also added a bay window to the front of the home.

"I added a bay window to the main bedroom because I have always liked that design feature and it creates a bit more space in the room as well," Melanie says.

The design has the main bedroom at the front with a walk-in wardrobe and ensuite with corner shower. Opposite is a study, which Melanie uses as a home office and

the children use for school work. Bedroom two is adjacent to the main and includes sliding door access to the main bathroom.

"With Jessica almost a teenager she is going to spend more and more time in the bathroom so this was a great design element of the home for us," Melanie says.

The three-way bathroom also includes a linen cupboard, with a second located just around the corner, next to the laundry that has outside access. In the back corner of the home is the third bedroom, which includes a built-in wardrobe.

The formal lounge and dining are placed side by side, with a sliding door leading to the outside from the dining room. A large U-shaped kitchen includes a walk-in pantry, overhead cupboards, underbench microwave niche and flat breakfast bar. The bay window ensures this space is bright and airy all year-round. ■

## HOMEVIEW

Try a contemporary-style chandelier to bring a touch of glam to your home's entry



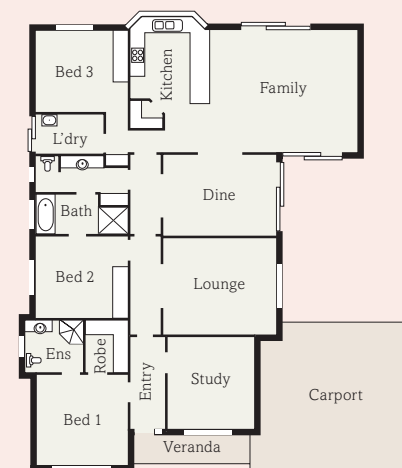
### add sparkle

A Larosa chandelier light provides a contemporary styling in the entry hall. It comes with a square or round nickel-plated base. Decorative glass beads reflect the light from the two bulbs creating a powerful illumination. From \$99.95, The Light Factory 8234 0533.



### faux stone

Blue Aran Grey laminate was used on the kitchen benchtops. Chemical, heat and scratch resistant, the laminate has a textured finish and produces a natural stone look. It is also available in a high gloss finish. The soft tones will blend with most neutral decor. \$45.13sqm, Australian Timbers 8332 2666.



### off the plan

**Builder** Fairmont Homes

**Design** Boston Mk II

**Location** Flag St, Seaford Meadows

**Price** from \$124,123

**Open** Sun|Mon|Wed|Sat 1.30pm-5pm

**Contact** 8327 0588 or 8112 3112

**Details** 212.47sqm total size | 189.85sqm living area | 15.65m width 18.12m depth | 2.4m ceiling 3 bedrooms | 2 bathrooms