



Mix and match Choose pavers that complement the brickwork of your home for a consistent style, top; Peggy's flat includes an open-plan kitchen, meals and living area, above.

FULL HOUSE

This mother and daughter got two homes in one with a custom design from Fairmont Homes

words **alexandra brown** photography **nick clayton**

Peggy McPhie was due for a hip replacement and living in a unit with stairs while her daughter Mary Giles's marriage had broken down.

The pair decided to combine what they had and set up house together.

"I was busy trying to keep an eye on my mum at her unit and saving to buy a new place so it made sense to move in together," Mary says.

Mary and her mum were originally planning to buy a house with a unit or granny flat out the back but soon realised it was going to be too expensive.

"We went to Fairmont and started by looking at houses with big games rooms at the back, thinking we could turn one of them into the granny flat," Mary says.

"John at Fairmont was excellent and drew us up a granny flat on the back of the Executive 170 design."

The Executive was the perfect design for Mary and her four sons with a large kitchen, two living areas, two dining rooms, four bedrooms and a three-way bathroom preventing arguments during the morning rush to get ready for work.

At the end of a long passage, with the boys' bedrooms on each side, is Peggy's granny flat. The flat features a large bedroom, ensuite, walk-in robe, living area, meals and its own kitchen.

"The boys prefer mum's cooking so we quite often eat down there in her flat. If there are more people we will eat up in my area as the table is bigger," Mary says.

"This house really gets buzzing at Christmas when all the boys and partners are home."

Mary says she quickly learnt that teenagers run in packs and so the pergola that runs the entire length of the house was essential for them to have space to hang out with friends.

With her brother Charles living with them, too, Mary says another bedroom would come in handy.

She says the formal dining off the front lounge doesn't get used as much as the other areas of the home so she plans to enclose it and utilise it as another bedroom for when there are extra houseguests. "I am always hopeful for grandchildren," Mary says. ■

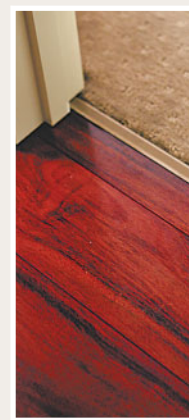
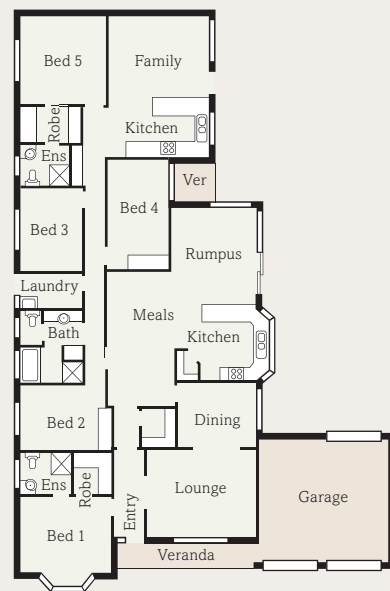
customBUILD



Clockwise from top Mary's kitchen overlooks the casual living area; Peggy McPhie and Mary Giles; overhead kitchen cupboards provide more storage.

HOMEVIEW

Save money by installing some products yourself



toughen up

Kendall timber veneer flooring in golden walnut runs throughout the house. It's ideal for high traffic areas, as it is water resistant and can't be damaged by high heels. \$29.95sqm, Discount City Carpets 8346 2588.



sparkling bright

A Primrose light with gorgeous sparkling crystals was installed at the entry to the house, and the living and dining areas. These batten fix lights are a DIY job – there's no need for an electrician. \$69.95, De Lights 8293 3751.

off the plan

Builder Fairmont Homes

Design Custom

Location Not on display. View similar homes at Noarlunga Downs, Corrimal Ave

Price from \$185,000

Open Sun|Mon|Wed|Sat 1.30pm-5pm

Contact 8186 6134 or 8112 3112

Details 292sqm total size | 245sqm living area 16.71m width | 25.29m depth 2.4m ceiling | 5 bedrooms | 3 bathrooms