



Clockwise from top The lounge provides a second living area; the Sienna fits comfortably on a compact block; Crystal McBearty and Gregg Mewett moved from a small unit into their home.

SPACE SAVER

Getting the most out of a tight block was possible with the Sienna design from Fairmont Homes

words **john merriman** photography **nick clayton**

Crystal McBearty and Gregg Mewett wanted a home that was easy to look after but big enough to cope with a new family.

The couple both work full-time and wanted a low maintenance design that was able to handle dinner parties and having friends over on the weekend.

"We looked at a few established homes but felt the prices didn't really give good value," Crystal says. The couple bought a block of land instead. "After visiting a few display homes we realised pretty quickly that we didn't really have a lot of options," she says. "Most of the designs were very similar, with a central hallway that has a lot of doors coming off it and an open-plan at the back. In the end we chose the Sienna because it has the open-plan living on one side and doesn't have the long central corridor so you don't have to walk all the way to the end of the house to get to the living area. Choosing this design also gave us the space to add another room."

"After speaking to a couple of real estate agents we made the decision to build a three-bedroom home with double

garage instead of a four-bedroom with a single because we were told this was often more attractive to prospective buyers. The home is certainly big enough for Gregg and I at the moment, and we don't really use the formal lounge, but again this is something that would become more important as our family grew and for a buyer down the track."

The lounge is adjacent to the rear living area with meals and a family room overlooked by a good-sized corner kitchen with ample bench space, walk-in pantry and overhead cupboards.

The couple chose to upgrade to double sliding doors leading off the family room to create a more open indoor-outdoor entertaining zone.

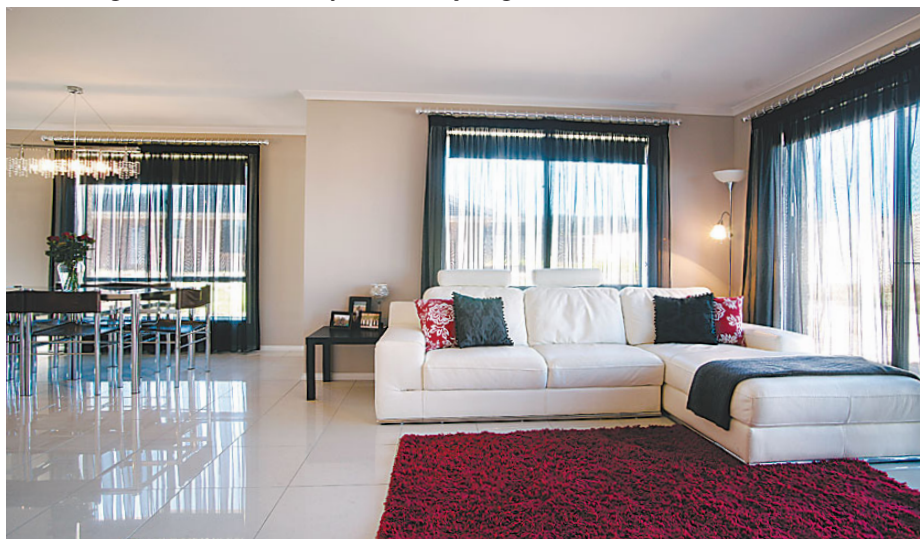
An opening off the family room leads to the two minor bedrooms, which are separated by a three-way bathroom with linen cupboard and laundry.

The main bedroom is at the front of the home. "We added a bay window the bedroom because it gives you that little bit more space as well as making the facade more attractive as well," Crystal says. ■

familyBUILD

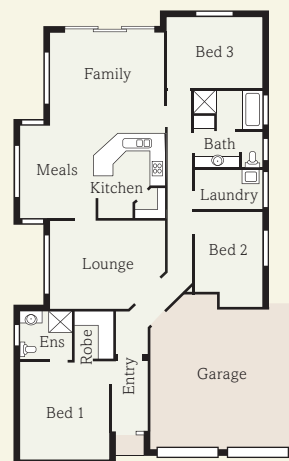


Entertaining zone Enjoy an intimate dinner for two, above, or cater for a crowd by sliding open the double glass doors of the family room and spilling outside onto the alfresco area, below.



HOME VIEW

Keep rooms bright to enhance the home's feeling of spaciousness



off the plan

Builder Fairmont Homes

Design Sienna

Location Not on display. View similar homes at The Boulevard, Parafield Gardens

Price from \$116,206

Open Sun|Mon|Wed|Sat 1.30pm-5pm

Contact 8182 3720 or 8112 3112

Details 184.18sqm total size | 146.38sqm living area | 11.5m width | 18.52m depth | 2.4m ceiling | 3 bedrooms | 2 bathrooms



reflective finish

Montessa Grey polished porcelain tiles (450mm x 450mm) give a contemporary style to the open-plan living area. The high gloss coating provides a mirror finish, adding to the feeling of space in the room. The tiles are pre-sealed and have a wear rating of five. They are available in other sizes. \$49.95sqm, Life's Tiles 8354 4355.



light up

This adjustable light can be hung from the ceiling or even used as a lamp. It takes large or small incandescent light bulbs and has a pigmented powder coating and a polystyrene plastic cover. From \$14.95 (not including cord set), IKEA 8154 4532.